

M5 Junction 10 Improvements Scheme

Statement of Community Consultation

Date: November 2021



Contents

Chapter	Page
1. Introduction	3
1.2. The Development Consent Order (DCO) process and our DCO application	4
1.3. The need for the M5 Junction 10 Improvements Scheme	5
1.4. The scheme	6
2. Consulting the community and previous consultations	8
2.2. Non-statutory consultation	8
2.3. Preferred route announcement	9
3. Next consultation – when and why	10
3.2. Environmental information	10
3.3. Who can take part?	11
3.4. How will we consult?	11
3.5. How to respond to the consultation	17
3.6. Ongoing communication	17
3.7. Information available at and details of local display/public information points	18
3.8. Next steps	21
Appendix A. Distribution Plan	23
Appendix B. GDPR Statement	24
Appendix C. Public Viewing Locations – Opening Times	25
Tables	
Table 3-1 – Consultation activities	11
Table 3-2 – Consultation documents	18
Table 3-3 – Methods to make consultation documents available	19
Figures	
Figure 1 – Local context around M5 Junction 10 Improvements Scheme	7

1. Introduction

- 1.1.1. Gloucestershire County Council is the Highway Authority for Gloucestershire. Alongside day-to-day highway and maintenance work and smaller improvement schemes, we also undertake major projects on key parts of the road network. The M5 Junction 10 Improvements Scheme will be promoted and delivered by ourselves, with support from National Highways and Homes England.
- 1.1.2. Our Statement of Community Consultation (SoCC) provides the background to the scheme and how our proposals and application to build it will progress. The statement also outlines our approach to consulting with the local community for the M5 Junction 10 Improvements Scheme. It provides details about how the local community can take part in the consultation and explains how the feedback received will influence our proposed design.
- 1.1.3. To make sure we approach our consultation in the very best way for the local community, we have consulted on this statement with the local authorities for the area in which the scheme lies. These are Gloucestershire County Council, Cheltenham Borough Council and Tewkesbury Borough Council. Whilst Gloucestershire County Council are the promoter of the scheme, the Council are also a statutory consultee, in its broader role as hosting authority, the local highway's authority and other respects.
- 1.1.4. This Statement has been prepared by Atkins on behalf of Gloucestershire County Council. References to "we", "our", "us" etc. are to Gloucestershire County Council in its role as the promoter of the scheme.

1.2. The Development Consent Order (DCO) process and our DCO application

- 1.2.1. The scheme is being developed under the Planning Act 2008 and we are publishing this statement under Section 47 (duty to consult local community) of that Act.
- 1.2.2. Under the Planning Act 2008, we are required to make an application to the Secretary of State for Transport for a Development Consent Order (DCO) to build this scheme. Our DCO application will be submitted to the Planning Inspectorate (PINS), who will examine our application and make a recommendation to the Secretary of State. The decision to grant consent to build the scheme is made by the Secretary of State and will be based on the recommendation of the Examining Authority (ExA) appointed to consider the DCO application.

- 1.2.3. A key consideration for the ExA and the Secretary of State, when assessing our DCO application, is the National Networks National Policy Statement (NNNPS). The NNNPS sets out the need for the development of road projects on the national network and is the policy against which decisions on major road projects will be made. We anticipate that our DCO application for the scheme will be submitted in summer 2022 with construction starting in 2024 if our application is successful.
- 1.2.4. There are a number of key stages in the DCO process, as set out below:
- Pre-application: Before we submit our DCO application, we have a statutory duty to carry out consultation on our proposals. This is an important opportunity for the local community to have their say, in order to influence our final design.
 - Acceptance: When we submit our DCO application, the PINS has 28 days to decide if our application meets the standards required to be accepted for examination. When we submit our application, the PINS, on behalf of the Secretary of State, must consider whether our consultation has been adequate and in particular whether it has complied with the details set out in this statement.
 - Pre-examination: At this stage, the public can register with the PINS to become an Interested Party for the examination stage.
 - Examination: Following the pre-examination stage the ExA has up to six months to carry out an examination including consideration of all important and relevant matters raised by Interested Parties. During this period the ExA will issue rounds of written questions and it is likely that a series of public hearings will also be held.
 - Recommendations and Decision: Within the next three months, the ExA will make a recommendation to the Secretary of State who will then make a decision on our DCO application within a further three-month period.
 - Post decision: There is a six-week period following the Secretary of State's decision where the decision can be legally challenged. This is known as Judicial Review.
- 1.2.5. You can find more information about the PINS and the Planning Act 2008 on the National Infrastructure Planning website: <http://infrastructure.planninginspectorate.gov.uk/> or by calling the PINS on 0303 444 5000.
- 1.2.6. The PINS has published a series of helpful Advice Notes which are available on its website, including Advice Note Eight: Overview of the nationally significant infrastructure planning process for members of the public and others, which includes Advice Note 8.1: Responding to the developer's pre-application consultation.

1.3. The need for the M5 Junction 10 Improvements Scheme

- 1.3.1. New housing and employment sites are proposed for development close to Junction 10 of the M5 including the west and north-west Cheltenham developments as set out in the adopted Joint Core Strategy. More information can be found at [Joint Core Strategy \(jointcorestrategy.org\)](http://jointcorestrategy.org). To unlock these housing and job opportunities, we need to ensure that there is sufficient highway capacity to accommodate the increased motorised and non-motorised traffic they will generate as set out in the JCS Transport Strategy. There is also a need to address existing pressure on the local highway network, particularly on M5 Junction 11.
- 1.3.2. An 'all movements' junction (see the description of the scheme below) has been identified as a key infrastructure requirement to enable the housing and economic development proposed by the Gloucestershire Local Enterprise Partnership's Strategic Economic Plan: [Strategic Economic Plan \(gfirstlep.com\)](http://gfirstlep.com). It is also central to the transport network sought in our adopted Gloucestershire Local Transport Plan: Transport Strategy for Gloucestershire to 2041 – Gloucestershire County Council: [Transport Strategy for Gloucestershire to 2041 - Gloucestershire County Council](#).
- 1.3.3. National Highways has also identified in their Birmingham to Exeter Route Strategy that improvements to M5 Junction 10 are a critical requirement to maintain the safe and efficient operation of the M5 corridor, whilst enabling the planned development and economic growth around Cheltenham, Gloucester and Tewkesbury. More information can be found at [Birmingham to Exeter.pdf \(publishing.service.gov.uk\)](http://publishing.service.gov.uk).

1.4. The scheme

- 1.4.1. M5 Junction 10 currently only provides slip roads from the north and to the north. This means that traffic from Cheltenham must access the southbound M5 via Junction 11. This has put increasing pressure on already congested local roads and particularly on Junction 11, which provides access to and from Cheltenham on the eastbound A40.
- 1.4.2. A new link road is required to allow traffic from the west Cheltenham development that will deliver the major development of [Golden Valley Development \(goldenvalleyuk.com\)](http://goldenvalleyuk.com) to use Junction 10 and thereby reducing pressure on Junction 11 and local roads.
- 1.4.3. Widening the A4019 is required to accommodate and manage the increase in motorised and non-motorised traffic that will be generated from the proposed housing and employment developments. The widening includes dualling of the A4019 for motorised traffic and provision of a separate, dedicated cycle track and footway lanes for non-motorised traffic.
- 1.4.4. More information on the need for the scheme and the scheme elements can be found on the scheme webpage at www.gloucestershire.gov.uk/J10.
- 1.4.5. The objectives of the scheme are to:
 1. Support economic growth and facilitate growth in jobs and housing by providing improved transport network connections in west and north-west Cheltenham.

2. Enhance the transport network in the west and north-west of Cheltenham area with the resilience to meet current and future needs.
3. Provide safe access to services for the local community, including for users of sustainable transport modes within and to west and north-west Cheltenham.
4. Improve the connectivity between the Strategic Road Network (SRN) and the local transport network in west and north-west Cheltenham.
5. Deliver a package of measures which is in keeping with the local environment, establishes biodiversity net gain and meets climate change requirements.



Figure 1 – Local context around M5 Junction 10 Improvements Scheme

2. Consulting the community and previous consultations

2.1.1. Our consultation strategy is split into two stages:

- A non-statutory public consultation (options consultation) which was held between 14 October and 25 November 2020.
- A statutory public consultation (the next consultation) starting on Wednesday 8 December 2021 and ending on Tuesday 15 February 2022.

2.2. Non-statutory consultation

2.2.1. In autumn 2020 we held a consultation to help us identify a preferred option for the new M5 Junction 10 design and link road, and for feedback to help ensure that our proposed improvements work for the local community. As part of the consultation, we proposed three options for the improvements to M5 Junction 10 and the link road to west Cheltenham (Option 2, Option 2A and Option 2B) as well as summarising the differences between the three options.

2.2.2. We promoted the consultation using a range of methods, including letters to interested parties, leaflets, posters, press releases to local and regional newspapers, and through the use of social media. We also developed a dedicated consultation webpage which served as the focal point of the consultation by hosting copies of consultation documents and interactive scheme maps. We used a survey to gather feedback and views on the scheme options listed above. As part of the non-statutory consultation, we also began to engage with all landowners that may be directly impacted as a result of the proposals.

2.2.3. Because of the COVID-19 pandemic and social distancing rules that were in place at the time of the consultation, we were unable to hold any public or face-to-face events.

2.2.4. Over 400 people and organisations responded to the consultation. A total of 440 survey responses were received during the consultation period (425 online and 15 hardcopies), supplemented by 36 written responses.

2.2.5. Key findings from the consultation showed:

- More than 80% of consultation survey respondents agreed or strongly agreed there was a need for the scheme.
- 37% supported Option 2 over Option 2A (28%) and Option 2B (6%). This option involves upgrading the existing M5 Junction 10 with a grade separated roundabout centred on the existing junction, rather than offsetting the new junction to the north (Option 2A) or to the south (Option 2B).

- Respondents also told us their views on specific elements of the design, including the alignment and width of the proposed West Cheltenham Link road, pedestrian, cycling and horse-riding facilities.
- A number of comments were also received on environmental issues including ecology, pollution, noise and light impacts as well as the impact of exhaust emissions on climate change and carbon emissions.

2.3. Preferred route announcement

- 2.3.1. Having carefully considered the feedback from all participants from the non-statutory public consultation and following further technical work, we decided to progress with design Option 2.
- 2.3.2. The decision to progress with Option 2 was announced on 16 June 2021 as part of the preferred route announcement. We believe that the design we have chosen to progress presents the best opportunity to deliver an improvement scheme which meets the needs of its users and our local community and delivers a return on investment. It is also the design which was most supported by respondents during the non-statutory public consultation.
- 2.3.3. More details of the non-statutory public consultation, including how we decided to progress Option 2, are included in the M5 Junction 10 Improvements Scheme Report on Public Consultation and the Preferred Route Announcement Leaflet. Both documents are available to view and download at <https://www.gloucestershire.gov.uk/J10>.

3. Next consultation – when and why

- 3.1.1. We will be holding a ten-week statutory public consultation, starting on Wednesday 8 December 2021 and ending on Tuesday 15 February 2022. This is called the ‘statutory’ consultation because it is held under Part 5 of the Planning Act 2008.
- 3.1.2. We are holding this consultation because there is still a significant amount of work to be done to develop the designs for the scheme, as well as refining potential mitigation measures for the environment and the local area. It is important to us that the consultation enables members of the public to have their say by:
- Encouraging the community to help shape and feedback on our proposals to maximise local benefits.
 - Helping people understand how our proposals support wider strategic and local objectives.
 - Understanding the local impact of our proposals.
 - Enabling potential mitigation measures to be considered and, if appropriate, built into the scheme before an application is submitted as well as providing the opportunity to give feedback on our proposed mitigation options.
- 3.1.3. During the consultation period, we will provide information on various topics, including:
- The alignment of the scheme.
 - Junction layouts.
 - Environmental assessments and potential environmental impacts of the scheme.
 - Environmental mitigation measures.
 - Other impacts of the scheme such as on congestion and on active travel and our proposed mitigation measures.

3.2. Environmental information

- 3.2.1. Under the requirements of the Infrastructure Planning (Environmental Impact Assessment) Regulations 2017, an Environmental Impact Assessment (EIA) will be undertaken for the scheme and submitted to the Planning Inspectorate as part of the DCO application.

- 3.2.2. As part of the development of the EIA and to inform the consultation, a Preliminary Environmental Information Report (PEIR) will be published ahead of the DCO application, at the time of the public consultation. The PEIR will set out the environmental information that we have gathered to date to inform consultees of the likely significant environmental implications of the scheme. It will also set out, in general terms, the potential mitigation measures that could be implemented to reduce any potential environmental impacts of the scheme, or why alternative solutions have been discounted. Publicising the PEIR alongside the other consultation documents will allow participants to make well-informed responses to the consultation.
- 3.2.3. The PEIR will be available online and a paper copy made available on request. Electronic copies will also be provided to prescribed consultees. More details of where the PEIR will be available to view as part of the consultation can be found below.

3.3. Who can take part?

- 3.3.1. Everybody is welcome to take part in our consultation and we welcome all views. We will take them into account before we submit our DCO application for the final design.

3.4. How will we consult?

- 3.4.1. We will use the following methods to raise awareness of the consultation and availability of the consultation documents:

Table 3-1 – Consultation activities

Method	Detail
Face-to-face public consultation events	<p>We will aim to hold two face-to-face public consultation events to allow the local community to view the proposals, talk with representatives from the project team and provide written feedback. Feedback can be shared with us by completing either an online or paper version of our consultation survey or by emailing M5Junction10@atkinsglobal.com.</p> <p>Although we will do everything that we reasonably can to make sure these events take place, they are subject to the evolving COVID-19 situation and the government rules and guidance that are in effect at the time, which may in the worst case require them to be cancelled. Because of the ongoing uncertainty around planning for face-to-face events we are proposing a host of other activities, as set out in this Statement, to ensure a full and effective statutory consultation. This will also ensure that those who would prefer not to attend a face-to-face event can still participate fully.</p>

Method	Detail
	<p>The consultation event locations have been identified based on the accessibility for people living within the vicinity of the scheme. We have considered the need to ensure each venue provides accessible entrances, clear signage and suitable COVID-19 hygiene measures. We have endeavoured to provide a comprehensive schedule of dates and times for our programme of face-to-face events. All events are subject to change based on ongoing COVID-19 restrictions and venue availability. All events will be held in accordance with the latest government guidelines on COVID-19.</p> <p>The events will take place at the following locations and times:</p> <p>Venue: Cheltenham West Community Fire and Rescue Station Address: Tewkesbury Road, Uckington, Cheltenham, GL51 9SN Date/Time: Tuesday 14 December 10am – 7pm</p> <p>Venue: Hesters Way Community Resource Centre Address: Cassin Drive, Cheltenham, GL51 7SU Date/Time: Saturday 15 January 10am – 5pm</p> <p>Digital and printed copies of the consultation materials will be available at consultation events to review. Copies of the consultation brochure and survey will be available to take away at the consultation events and responses sent back separately via the Freepost address noted below.</p> <p>If any of the events included in the list above need to be cancelled for example due to social distancing restrictions from the COVID-19 pandemic, we will endeavour to provide additional virtual consultation events (see below) for the community to view the proposals. Where any changes to the events are required, we will publicise the changes through the Gloucestershire County Council website and social media.</p>

Method	Detail
Virtual public consultation events	<p>We will hold a series of virtual consultation events, in addition to the face-to-face public consultation events above to provide an extra platform for the local community and stakeholders to view the proposals.</p> <p>We will be hosting four virtual consultation events with the opportunity to hold additional events if social distancing restrictions affect the number of face-to-face events we are able to hold. Attendees will have the opportunity to listen to members of the project team present the proposals and get answers to any questions they may have.</p> <p>These events are free and open to everyone and similarly to the face-to-face consultation events, have been planned for a range of times. The virtual events will take place on the following dates:</p> <p>Virtual Event 1: Wednesday 15 December 7pm – 8:30pm Virtual Event 2: Thursday 13 January 2pm – 3:30pm Virtual Event 3: Saturday 29 January 2pm – 3:30pm Virtual Event 4: Wednesday 2 February 7pm – 8:30pm</p> <p>Sign up using this link: www.gloucestershire.gov.uk/J10</p> <p>From this webpage, there will be a link to the consultation website where there will be an events page.</p> <p>Joining instructions, for access via computers, portable devices and telephones, will be made available on this page. to ensure the events are accessible to all members of the local community. Comments made via the chat function during the virtual events will not be considered as formal responses to the consultation. Consideration will be given to written responses to the consultation, via the survey, email or letters.</p> <p>A recording of each virtual event will be uploaded to the scheme webpage. A statement outlining consent for the event to be recorded will be clearly stated next to the joining instructions on the scheme webpage and at the start of each event.</p>

Method	Detail
Scheme webpage	Information on the proposed scheme, public consultation events, what we are consulting on and how to respond will be available on the scheme webpage. This will become publicly available on Wednesday 8 December 2021, the start date of the consultation, at www.gloucestershire.gov.uk/J10
Leaflet mail out	<p>Working with Cheltenham Borough Council and Tewkesbury Borough Council we have developed a consultation target area for the distribution of our consultation information. This is based on who we think will be most affected by our proposals.</p> <p>This area is shown on the plan at Appendix A.</p> <p>We will let people within this area marked in Appendix A know about our consultation by sending them a leaflet. The leaflet will provide details of the public consultation events, how to find out more information and ways in which they can provide feedback. Addresses will be taken from the latest version of the Royal Mail database.</p>
Posters	Posters advertising the consultation will be shared with Cheltenham Borough Council and Tewkesbury Borough Council and at a number of public information points as listed in Appendix C.
Emails and letters	<p>We will send either emails or letters advising of the consultation and how to get involved to:</p> <ul style="list-style-type: none"> • MPs in the Gloucestershire area. • Elected representatives at Gloucestershire County Council, Cheltenham Borough Council and Tewkesbury Borough Council. • Local parish councils, including: Boddington Parish Council, Elmstone Hardwicke Parish Council, Stoke Orchard and Tredington Parish Council, Staverton Parish Council, Swindon Parish Council and Uckington Parish Council
Council member briefing	We will host a briefing event before the start of the consultation to raise awareness amongst council members to provide the opportunity to discuss the proposals. Three briefings will be held: one for members of Gloucestershire County Council, one for Cheltenham Borough Council and one for Tewkesbury Borough Council.

Method	Detail
Partner communications	We will provide information at the start of the consultation, including posters, to directly affected local authorities, National Highways, Homes England and other organisations such as GFirst LEP so that they can raise awareness of the consultation through their own communications channels.
Statutory notices	<p>Statutory notices to publicise the proposed DCO application and this Statement will be published as follows:</p> <ul style="list-style-type: none"> • Proposed DCO application - once in a national newspaper (the Times) and the London Gazette and twice in local circulating newspapers (Gloucester Citizen and Gloucestershire Echo). • Publicising this Statement - once in a national newspaper (the Times) and the London Gazette and twice in local circulating newspapers (Gloucester Citizen and Gloucestershire Echo).
Media releases	<p>The following press publications and media outlets will be issued with a media release at the start of the consultation:</p> <ul style="list-style-type: none"> • Gloucestershire Echo • Gloucester Citizen • Gloucestershire Live • Western Daily Press • Punchline Magazine • BBC Points West/South West • BBC Midlands Today • ITV South West • ITV Central • Greatest Hits Radio • Heart FM • BBC Radio Gloucestershire <p>A second media release will be issued to these publications and outlets two weeks before the end of the consultation period to encourage people to provide their feedback before the consultation period closes.</p> <p>In addition, an advert promoting the public consultation events, both face-to-face and virtual, will be publicised via Gloucestershire Live.</p>

Method	Detail
Social media	<p>We will promote the consultation using a social media campaign on the following Gloucestershire County Council social media accounts:</p> <p>Twitter: @GlosCC</p> <p>Facebook: /GloucestershireCountyCouncil</p> <p>Instagram: @gloucestershirecc</p> <p>YouTube: https://www.youtube.com/c/gloscountycouncil/featured</p> <p>Consultation feedback will not be accepted through social media channels.</p>
Variable Message Signs (VMS) and A-frame signs	<p>We will promote the consultation to road users by using Variable Message Signs (VMS) and A-frames located at key locations close to the scheme.</p>
Ad Hoc Meetings	<p>Meetings with businesses, residents, interest groups and members of the local community can be requested by using the email address or telephone number detailed below. However, these meetings will be at the discretion of the project team and we are unable to guarantee that all requests for a meeting will be granted. Meetings may be face-to-face (depending on COVID-19 and consultee preference) or virtual, via a platform such as Microsoft Teams.</p>

- 3.4.2. Any activity(ies) that cannot be undertaken due to circumstances beyond our control (such as severe weather conditions or COVID-19 restrictions) where possible, will be substituted with similar activity(ies) and advertised in local newspapers (via press release) circulating in the vicinity of the scheme. Any activity changes will also be published on Gloucestershire County Council's Twitter account, (@GlosCC).

3.5. How to respond to the consultation

- 3.5.1. Comments on the proposals and the consultation can be made by completing the consultation survey which will be produced to help participants to provide comments on the scheme. The survey will be made available on the scheme's consultation website www.gloucestershire.gov.uk/J10. If you require assistance filling out this survey, please call Gloucestershire County Council Customer Services on 01452 426256 (Monday – Friday 9am – 4pm, excluding bank holidays).
- 3.5.2. You can also provide comments by:
- Consultation event: Attending a face-to-face consultation event, where there will be the opportunity to complete a paper copy of our feedback survey.
 - By post: Request a paper copy of the survey free of charge by contacting M5Junction10@atkinsglobal.com. Completed paper copies can either be given to project team members at consultation events or returned by Freepost M5 Junction 10.
- 3.5.3. For all other project queries, including any enquiries in relation to documents, maps and plans please email M5Junction10@atkinsglobal.com or contact 01454 667900.
- 3.5.4. All responses must be received by Tuesday 15 February 2022 at 11.59pm. Responses received after that date may not be considered.
- 3.5.5. If you have any questions about this consultation, please contact the project team using any of the details set out in this Statement. Responses received as part of the consultation will be anonymised, stored and handled in accordance with Gloucestershire County Council's policy on General Data Protection Regulation (GDPR). Please see Appendix B for information on your data rights and GDPR.
- 3.5.6. We are aware that other organisations are likely to be carrying out public consultation activities on their projects and make demands on the time of the public and their representatives. We will aim to ensure that our consultation has due regard to other consultations taking place in the area by maintaining regular contact with their communications teams.

3.6. Ongoing communication

- 3.6.1. Whilst we encourage feedback to be provided during the statutory consultation and cannot guarantee that feedback provided after the consultation has closed will be considered, we have a dedicated email address and telephone number that can be used to contact us outside of these dates.
- 3.6.2. Please contact us by emailing M5Junction10@atkinsglobal.com or calling 01454 667900.

3.7. Information available at and details of local display/public information points

- 3.7.1. We will make the following documents available as part of the consultation:

Table 3-2 – Consultation documents

Document	Detail
Consultation Brochure	This document will be available digitally and in paper copy on request, providing a summary of the proposals including: <ul style="list-style-type: none"> • Background to the scheme • Summary of the proposed scheme • Vision for the scheme • Information about potential benefits, effects and impacts of the proposed scheme • How we propose to mitigate any potential impacts • Signposts for readers to more detailed information reports and how to provide feedback on the proposed scheme.
Consultation Feedback Survey	Available in paper copy and online, the survey will be available for people to provide their feedback on the specific aspects of the scheme and provide overall feedback on our proposals.
Preliminary Environmental Information Report (PEIR)	This will contain preliminary information on the likely environmental effects of our proposals as we have ascertained them so far, for example noise and air quality, and how we propose to reduce these effects, as well as how we propose to maximise the benefits of the scheme. A non-technical summary of the PEIR will also be made available.
Indicative Application Red Line Boundary Plan	This will show our proposed red line boundary for our DCO application.
Scheme Plan	This will provide details of the design for the proposed scheme.

Document	Detail
A Notice of Application	We will publish a notice of the consultation and provide it to statutory consultees as required. Statutory consultees are defined as those who we are required to consult with by law.
Statement of Community Consultation (SoCC)	This Statement will be made available as part of the consultation.

3.7.2. We will make these consultation documents available to view in the following ways:

Table 3-3 – Methods to make consultation documents available

Document	Detail												
Scheme webpage	The consultation documents listed in Table 3-2 will be accessible from Wednesday 8 December 2021 via the scheme's webpage: www.gloucestershire.gov.uk/J10												
Public information points	<p>The venues listed overleaf will display a poster for the duration of the consultation period containing a QR code for people to scan, linking them to the scheme webpage. Cheltenham and Tewkesbury libraries will also host hard copies of the consultation brochure and survey for the duration of the consultation period.</p> <p>In addition, all public computers located in Gloucestershire county libraries will have a link to the M5 Junction 10 scheme webpage on their desktop for the duration of the consultation period.</p> <p>See Appendix C for full opening times.</p> <table> <tr> <th>Public Information Point</th><th>Address</th></tr> <tr> <td>Cheltenham West Community Fire and Rescue Station</td><td>Tewkesbury Road, Uckington, Cheltenham, GL51 9SN</td></tr> <tr> <td>Swindon Village Community Hall</td><td>Church Road, Swindon Village, Cheltenham, GL51 9QP</td></tr> <tr> <td>Cotswolds Area Civil Service Club</td><td>3 Tewkesbury Road, Uckington, Cheltenham, GL51</td></tr> <tr> <td>Sainsbury's Gallagher Retail Park</td><td>Gallagher Retail Park, Cheltenham, GL51 9RR</td></tr> <tr> <td>Tewkesbury Community Fire and Rescue Station</td><td>Oldbury Road, Tewkesbury, GL20 5ND</td></tr> </table>	Public Information Point	Address	Cheltenham West Community Fire and Rescue Station	Tewkesbury Road, Uckington, Cheltenham, GL51 9SN	Swindon Village Community Hall	Church Road, Swindon Village, Cheltenham, GL51 9QP	Cotswolds Area Civil Service Club	3 Tewkesbury Road, Uckington, Cheltenham, GL51	Sainsbury's Gallagher Retail Park	Gallagher Retail Park, Cheltenham, GL51 9RR	Tewkesbury Community Fire and Rescue Station	Oldbury Road, Tewkesbury, GL20 5ND
Public Information Point	Address												
Cheltenham West Community Fire and Rescue Station	Tewkesbury Road, Uckington, Cheltenham, GL51 9SN												
Swindon Village Community Hall	Church Road, Swindon Village, Cheltenham, GL51 9QP												
Cotswolds Area Civil Service Club	3 Tewkesbury Road, Uckington, Cheltenham, GL51												
Sainsbury's Gallagher Retail Park	Gallagher Retail Park, Cheltenham, GL51 9RR												
Tewkesbury Community Fire and Rescue Station	Oldbury Road, Tewkesbury, GL20 5ND												

Document	Detail	
	Cheltenham Library	Clarence Street, Cheltenham, GL50 3JT
	Prestbury Library	The Burgage, Prestbury, Cheltenham, GL52 3DN
	Bishops Cleeve Library	Tobyfield Road, Bishops Cleeve, Cheltenham, GL52 8NN
	Winchcombe Library	Back Lane, Winchcombe, Cheltenham, GL54 5PZ
	Hesters Way Library	Goldsmith Road, Cheltenham, GL51 7RT
	Charlton Kings Library	Church Street, Charlton Kings, Cheltenham, GL53 8AR
	Up Hatherley Library	Caernarvon Road, Cheltenham, GL51 3BW
	Churchdown Library	Parton Road, Churchdown, Gloucester, GL3 2AF
	Hucclecote Library	Hucclecote Road, Gloucester, GL3 3RT
	Longlevens Library	Church Road, Longlevens, Gloucester, GL2 0AJ
	Brockworth Link and Community Library	Moorfield Road, Brockworth, Gloucester, GL3 4EX
	Tewkesbury Library	Sun Street, Tewkesbury, GL20 5NX
	Gloucester Library	Brunswick Road, Gloucester, GL1 1HT
Requests for documents	<p>Paper copies of the consultation materials can be provided on request. Please contact us by emailing M5Junction10@atkinsglobal.com or by calling 01454 667900 and leaving a message. There may be a charge of up to £200 for the PEIR and other documents due to their size.</p>	

- 3.7.3. If any document in Table 3.2 above is required in a different language or format like accessible PDF, large print, easy read, audio recording or braille, please contact the project team using any of the details set out in this Statement.

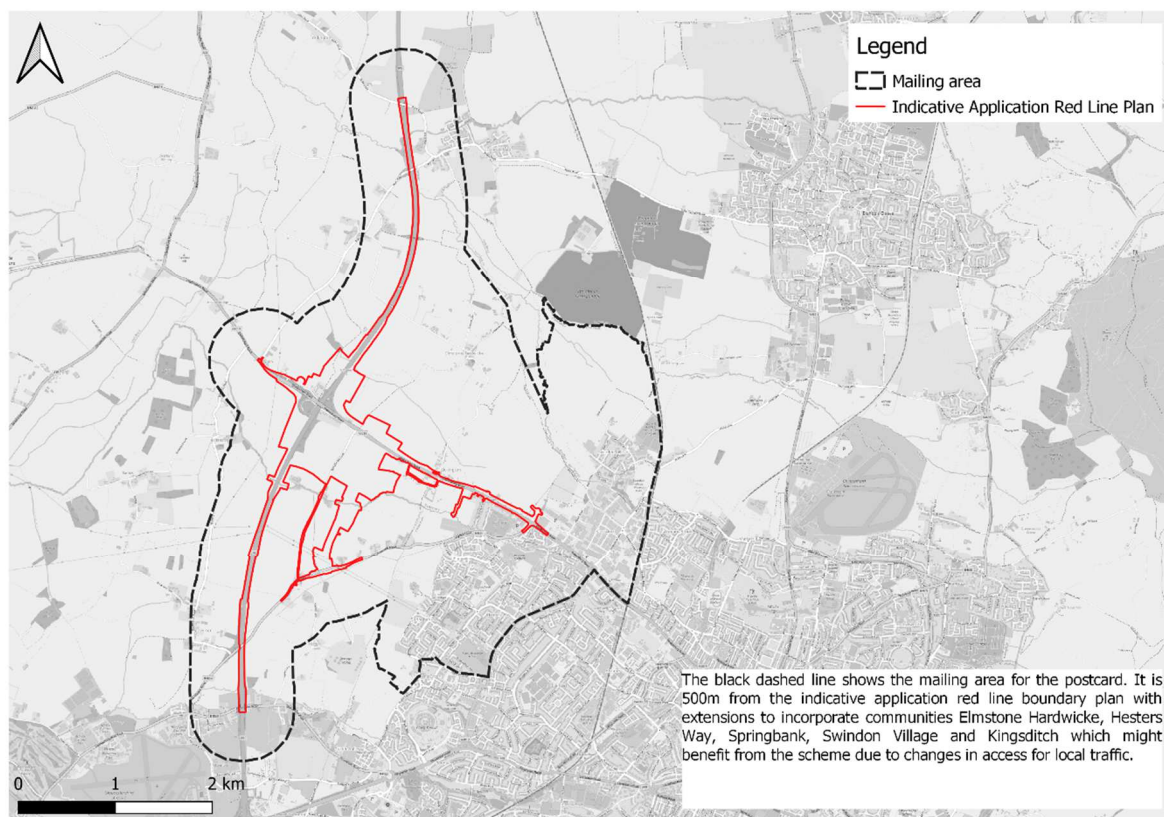
3.8. Next steps

- 3.8.1. We will record and carefully consider all responses received during the consultation and consider these when finalising our application and before we submit it to the PINS.
- 3.8.2. We will summarise our findings in a Consultation Report. This will include a description of how our application was informed by the responses received and outline any changes made as a result of consultation. The report will form part of our DCO application to the PINS that is planned for late 2022. It will also be made available on the scheme webpage.
- 3.8.3. The PINS will decide whether the application meets the required standards to proceed to examination and will determine whether our consultation has been adequate.
- 3.8.4. If, as a result of feedback from the design consultation, the proposals change to the extent that it is necessary to undertake further consultation, this would be undertaken in accordance with the principles and methods set out in this Statement.
- 3.8.5. If you have any queries about this scheme, please contact the project team directly by calling 01454 667900 or emailing M5Junction10@atkinsglobal.com. Please note the phone number will automatically ask you to leave a voicemail. A member of the M5 Junction 10 Communications team will respond to any voicemails received.

Appendices



Appendix A. Distribution Plan



Appendix B. GDPR Statement

B.1. GDPR Statement for M5 Junction 10 Statutory Consultation

- B.1.1. Gloucestershire County Council will use the information you provide in the survey in order to gather views on proposals for the M5 Junction 10 Improvements Scheme. The council is committed to ensuring that our services are delivered fairly. We are also asking you to answer questions about yourself so that we can understand how representative the responses we receive are. We do this to follow the Public Sector Equality Duty and pay due regard to the Equality Act 2010. This information will be used to inform updates to our Equality Impact Assessment and to review our consultation approach going forward. We will also use your data to better understand the services we provide and to help us build those services for the future. We may also use your data to identify if our services are fulfilling our legal obligations.
- B.1.2. Gloucestershire County Council will share your information with:
- Atkins, our consultation partner
 - Accent who process your data on behalf of the council.
- B.1.3. Your personal data may also be shared with regulatory and statutory bodies who assess council performance and financial spend, as well as where required by law, such as to prevent and detect crime or fraudulent activity.
- B.1.4. More information can be found in our privacy notice [Gloucestershire County Council Privacy Notice - Gloucestershire County Council](#) or for the M5 Junction 10 Improvements Scheme Privacy Statement visit <https://www.gloucestershire.gov.uk/highways/highways-privacy-notices/>

Appendix C. Public Information Points – Opening Times

- C.1.1. Opening times for the venues below are correct at time of writing (October 2021) however the opening times are subject to change, particularly in response to the COVID-19 pandemic. We encourage readers to confirm opening times before travelling to a venue, either by searching online or calling the venue directly.
- C.1.2. Venues may also operate on an appointment only basis so we also encourage readers to check this before travelling to a specific venue.

Venue	Address	Opening Times
Cheltenham West Community Fire and Rescue Station	Tewkesbury Road, Uckington, Cheltenham, GL51 9SN	Open 24 hours a day
Swindon Village Community Hall	Church Road, Swindon Village, Cheltenham, GL51 9QP	Sunday-Thursday: 8am-10pm Friday-Saturday: 8am-11:30pm
Cheltenham Area Civil Service Club	3 Tewkesbury Road, Uckington, Cheltenham, GL51 9SL	Varying opening times
Sainsbury's Gallagher Retail Park	Gallagher Retail Park, Cheltenham, GL51 9RR	Monday-Saturday: 7am-10pm Sunday: 10am-4pm
Tewkesbury Community Fire and Rescue Station	Oldbury Road, Tewkesbury, GL20 5ND	Open 24 hours a day
Cheltenham Library	Clarence Street, Cheltenham, GL50 3JT	Monday: 9am-7pm Tuesday: 9am-5:30pm Wednesday: 9am-1pm Thursday: 9am-5:30pm Friday: 9am-7pm Saturday: 10am-4pm Sunday: Closed

Venue	Address	Opening Times
Prestbury Library	The Burgage, Prestbury, Cheltenham, GL52 3DN	Sunday, Monday & Wednesday: Closed Tuesday: 10am-1pm & 2pm-7pm Thursday: 10am-1pm Friday: 2pm-5pm Saturday: 9:30am-1pm
Bishops Cleeve Library	Tobyfield Road, Bishops Cleeve, Cheltenham, GL52 8NN	Monday & Tuesday: 1pm-5pm Wednesday: 10am-5pm Thursday: 9am-5pm Friday: 9am-5pm Saturday: 9am-3pm Sunday: Closed
Winchcombe Library	Back Lane, Winchcombe, Cheltenham, GL54 5PZ	Thursday & Sunday: Closed Monday: 10am-2pm Tuesday & Wednesday: 10am-1pm & 2pm-5:30pm Friday: 10am-1pm & 2pm-6pm Saturday: 10am-1pm
Hesters Way Library	Goldsmith Road, Cheltenham, GL51 7RT	Thursday & Sunday: Closed Friday: 2pm-5pm Saturday & Wednesday: 10am-1pm Monday: 1pm-5pm Tuesday: 10am-6pm
Charlton Kings Library	Church Street, Charlton Kings, Cheltenham, GL53 8AR	Sunday & Monday: Closed Tuesday & Wednesday: 9:30am-1pm & 2pm-5:30pm Thursday: 9:30am-1pm & 2pm-5:30pm Friday: 9:30am-1pm & 2pm-5:30pm Saturday: 9:30am-3pm

Venue	Address	Opening Times
Up Hatherley Library	Caernarvon Road, Cheltenham, GL51 3BW	Monday: 9:30am-1pm & 2pm-5pm Tuesday: 9:30am-1pm & 2pm-5:30pm Wednesday & Sunday: Closed Thursday: 9:30am-1pm & 2pm-7pm Friday: 9:30am-7pm Saturday: 10am-1pm
Churchdown Library	Parton Road, Churchdown, Gloucester, GL3 2AF	Tuesday: 10am-1pm & 2pm-6pm Wednesday, Thursday & Friday: 10am-1pm & 2pm-5pm Saturday: 10am-1pm Sunday & Monday: Closed
Hucclecote Library	Hucclecote Road, Gloucester, GL3 3RT	Wednesday to Friday: 2pm-5pm Saturday, Monday & Tuesday: 10am-1pm Sunday: Closed
Longlevens Library	Church Road, Longlevens, Gloucester, GL2 0AJ	Monday & Friday: 10am-1pm Tuesday & Thursday: 10am-1pm & 2pm-5pm Wednesday: 10am-1pm & 2pm-7pm Saturday: 10am-4pm Sunday: Closed
Brockworth Link and Community Library	Moorfield Road, Brockworth, Gloucester, GL3 4EX	Monday to Thursday: 10am-1pm & 2pm-5pm Saturday: 10am-12:30pm Friday & Sunday: Closed
Tewkesbury Library	Sun Street, Tewkesbury, GL20 5NX	Monday & Friday: 9:30am-5pm Tuesday & Thursday: 9:30am-7pm Wednesday: 9:30am-1pm Saturday: 9:30am-4pm Sunday: Closed
Gloucester Library	Brunswick Road, Gloucester, GL1 1HT	Monday, Tuesday & Thursday: 9am-7pm Wednesday & Friday: 9am-5:30pm Saturday: 9am-4pm Sunday: Closed

Contact us on:

M5Junction10@atkinsglobal.com

01454 667900

Major Projects

Highways Commissioning

Block 5, Floor 5

Shire Hall

Gloucester

www.gloucestershire.gov.uk/J10